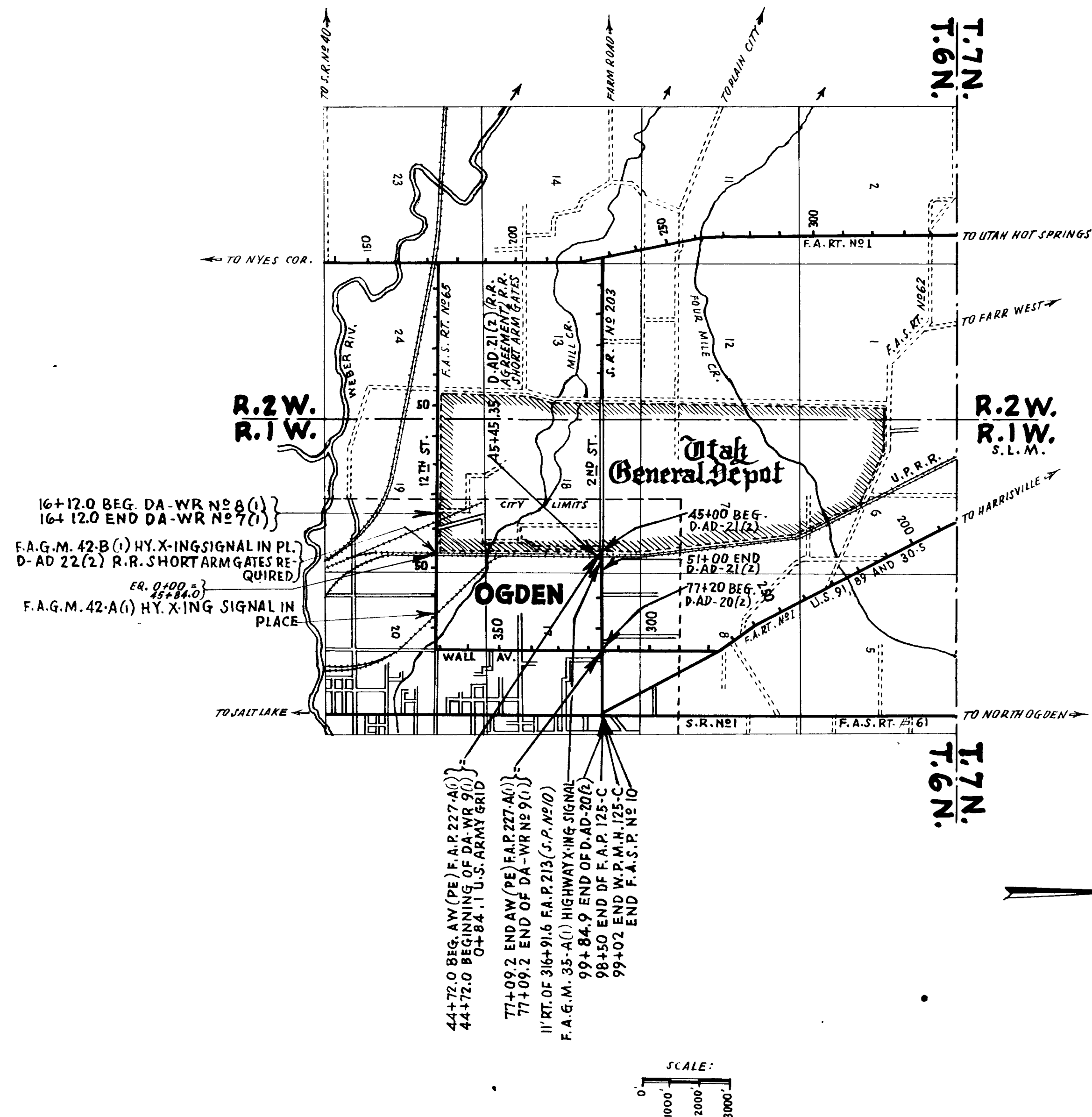
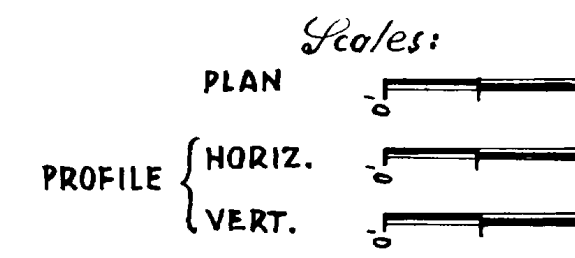


# STATE OF UTAH STATE ROAD COMMISSION

## PLANS OF PROPOSED STATE ROAD

FEDERAL AID PROJECT  
WEBER COUNTY

D-AD-21(2) ~ LENGTH 0.114 MILES  
 D-AD-20(2) ~ LENGTH 0.429 MILES  
 D-AD-21(2) ~ R.R. AGREEMENT



FED. ROAD DIST. NO.	STATE	FED. AID PROJ. NO.	FISCAL YEAR	SHEET NO.	TOTAL SHEETS
UT.	UTAH	D-AD-21(2)	POSTWAR	1	
"	"	D-AD-20(2)	"	1	
"	"	D-AD-21(2)	"	1	
"	"	D-AD-22(2)	"	1	

INDEX TO SHEETS D-AD-21(2)

SHEET NO.	DESCRIPTION	DRAWING NO.	STATION
1	TITLE SHEET		
2	GRADE SHEET AND TYPICAL SECTION		
3-4	STD. HIGHWAY SIGNS		8-95, 142
	X-SECTIONS		

INDEX TO SHEETS D-AD-20(2)

SHEET	DESCRIPTION	DRAWING	STATION
1	TITLE SHEET		
2	TYPICAL SECTION		
3	PLAN & PROFILE		
4-5	STD. HIGHWAY SIGNS		8-95, 142
	X-SECTIONS		

INDEX TO SHEETS D-AD-21(2) R.R. AGREEMENT

SHEET	DESCRIPTION	DRAWING	STATION
1	TITLE SHEET		
2	SITUATION PLAN		
3	HIGHWAY X-ING SIGNAL DETAILS	U.P.R.R. C-3766	
4-6	LOCATION AND CIRCUIT PLAN	" C-4446	

INDEX TO SHEETS D-AD-22(2)

SHEET	DESCRIPTION	DRAWING	STATION
1	TITLE SHEET		
2	SITUATION PLAN		
3	HY. X-ING SIGNAL DETAILS	U.P.R.R. C-3766	
4-5	LOCATION AND CIRCUIT PLAN	" C-4446	

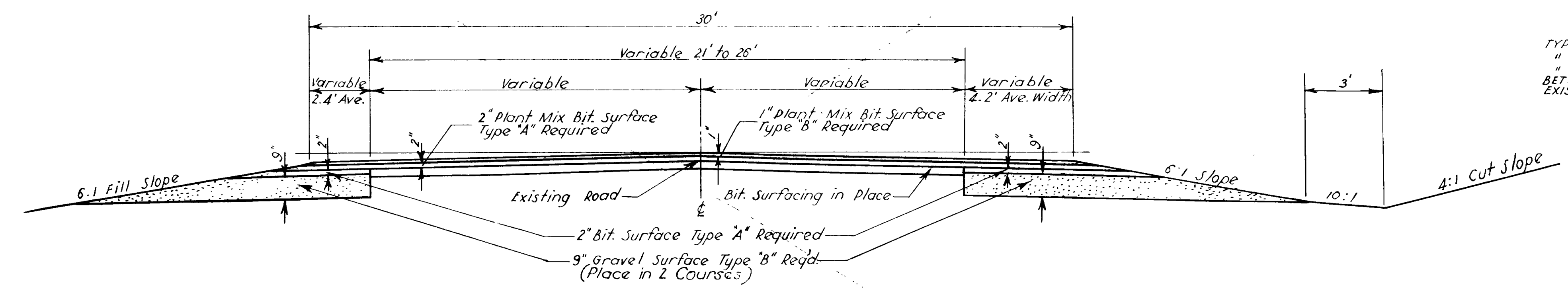
APPROVED JULY 1955  
 STATE ROAD COMMISSION OF UTAH  
*Robert Johnson*  
 CHIEF ENGINEER

DEPARTMENT OF COMMERCE  
 BUREAU OF PUBLIC ROADS

APPROVED \_\_\_\_\_  
 DISTRICT ENGINEER DATE

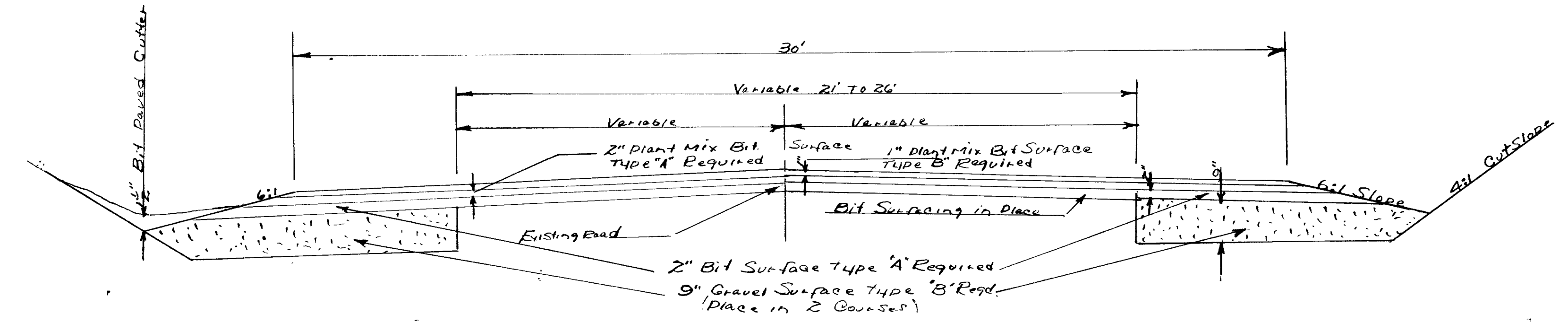
# TYPICAL CROSS SECTION

FED. ROAD DIST. NO.	STATE	PROJ. NO.	FISCAL YEAR	SHEET NO.	TOTAL SHEETS
UTAH	UTAH	DA0-2002	POST WAR	2	



**BIT. MATERIAL**  
 TYPE 120-150 PENETRATION, REQUIRED IN MIX  
 " MC-1 OR MC-2 REQD. FOR PRIME COAT  
 " RC-1 " RC-2 " " SEAL "  
 BETWEEN COURSES OF PLANT MIX & OVER  
 EXISTING SURFACE (WHEN DIRECTED BY THE ENGINEER)

NOTE: Grade & Gravel Driveways as directed  
 STA. 77+20 TO STA. 84+9



REVISIONS  
 DATE BY

UTAH STATE ROAD COMMISSION  
 SALT LAKE CITY UTAH

PLANT MIX BIT  
 SURFACED ROADWAY

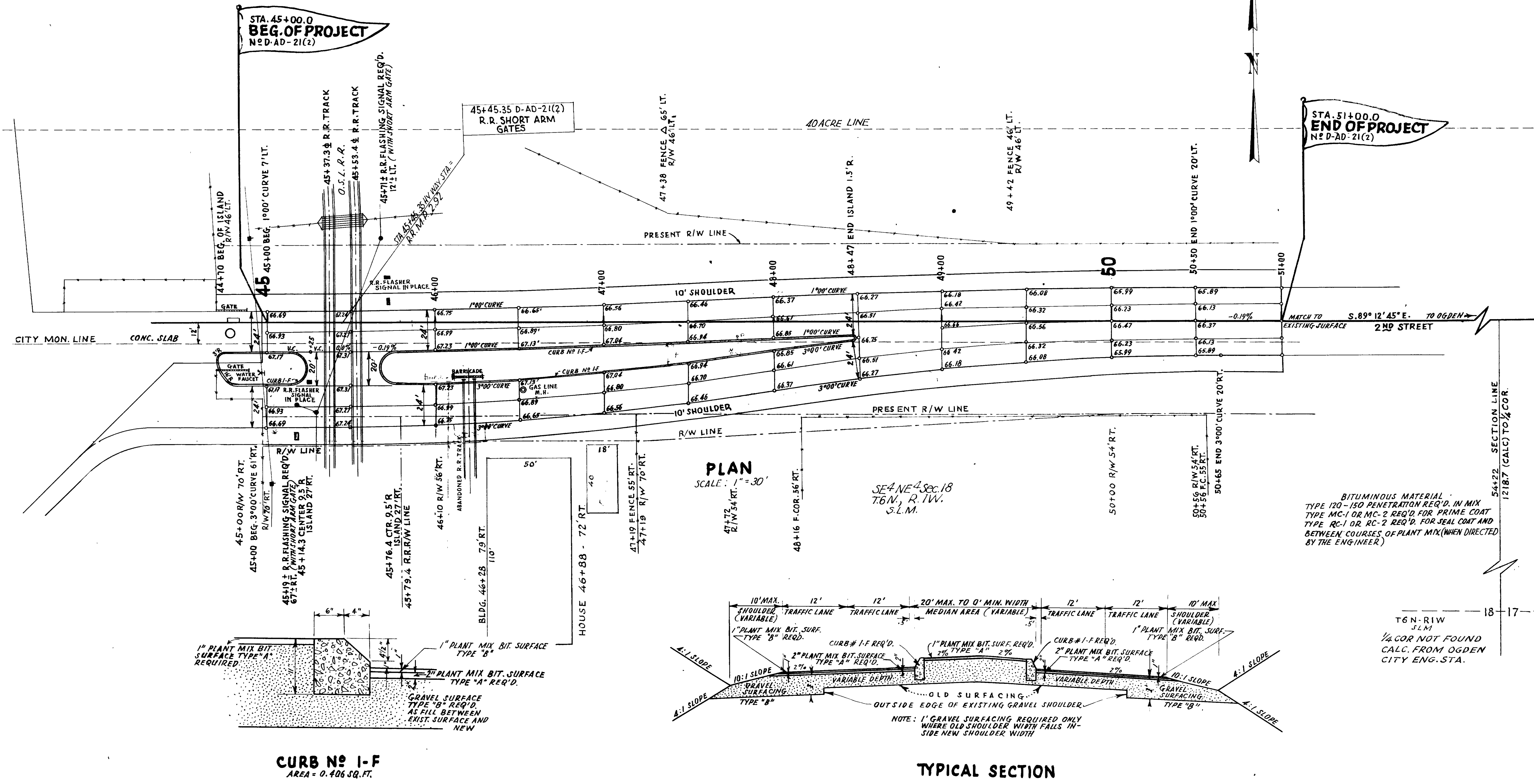
DESIGN SPEED M.P.H.



STATION	IN PLACE	REQUIRED	REMARKS	DRAWING
45+19±		R.R. SHORT ARM GATE - 67± RT.		UPPER C-3766-FIG A
45+71±	R.R. FLASHER SIGNAL	R.R. SHORT ARM GATE - 12± LT.	SALVAGE EXIST. SIGNAL	SC-2446 (3515)
45+25±	"	"	"	"

FED. ROAD DIST. NO.	STATE	FED. AID PROJ. NO.	FISCAL YEAR	SHEET NO.	TOTAL SHEETS
UT.	UTAH	D-AD-21(2)	POSTWAR	2	4
"	"	D-AD-21(2)		2	6

R.R. Agreement



BITUMINOUS MATERIAL:  
TYPE 120-150 PENETRATION REQ'D. IN MIX  
TYPE MC-1 OR MC-2 REQ'D. FOR PRIME COAT  
TYPE RC-1 OR RC-2 REQ'D. FOR SEAL COAT AND  
BETWEEN COURSES OF PLANT MIX (WHEN DIRECTED  
BY THE ENGINEER)

T6N-R1W  
S.L.M.  
1/4 COR NOT FOUND  
CALC. FROM OGDEN  
CITY ENG. STA.

REVISIONS  
DATE BY

NO.	DATE	BY	DESCRIPTION

UTAH STATE ROAD COMMISSION  
SALT LAKE CITY, UTAH

5

**TURN SIGN**  
YELLOW BACKGROUND WITH BLACK ARROW, 12" WIDE AND 18" BLACK BORDER.

**SLOW**  
YELLOW BACKGROUND WITH BLACK LETTERS, 18" WIDE AND 18" BLACK BORDER.

**SHARP CURVE**  
YELLOW BACKGROUND WITH BLACK ARROW, 12" WIDE AND 18" BLACK BORDER.

**ROUGH ROAD**  
YELLOW BACKGROUND WITH BLACK LETTERS, 18" WIDE AND 18" BLACK BORDER.

**FLAT CURVE**  
YELLOW BACKGROUND WITH BLACK ARROW, 12" WIDE AND 18" BLACK BORDER.

**BRIDGE OUT**  
YELLOW BACKGROUND WITH BLACK LETTERS, 18" WIDE AND 18" BLACK BORDER.

**FRESH OIL**  
YELLOW BACKGROUND WITH BLACK LETTERS, 18" WIDE AND 18" BLACK BORDER.

**DETOUR**  
WHITE BACKGROUND WITH BLACK LETTERS, 18" WIDE AND 18" BLACK BORDER.

**END DETOUR**  
WHITE BACKGROUND WITH BLACK LETTERS, 18" WIDE AND 18" BLACK BORDER.

**STOP**  
YELLOW BACKGROUND WITH BLACK LETTERS, 18" WIDE AND 18" BLACK BORDER.

**UTAH 47**  
WHITE BACKGROUND WITH BLACK LETTER AND 18" BLACK BORDER.

**UTAH 91**  
WHITE BACKGROUND WITH BLACK LETTER AND 18" BLACK BORDER.

**GENERAL NOTES:**  
ALL SIGNS SHALL BE PAINTED WITH WHITE BACKGROUND UNLESS OTHERWISE SPECIFIED AS CONTAINED IN THE UTAH STATE ROAD COMMISSION'S SPECIFICATIONS FOR ROAD SIGNS. ALL SIGNS SHALL BE PAINTED WITH WHITE BACKGROUND UNLESS OTHERWISE SPECIFIED AS CONTAINED IN THE UTAH STATE ROAD COMMISSION'S SPECIFICATIONS FOR ROAD SIGNS. ALL SIGNS SHALL BE PAINTED WITH WHITE BACKGROUND UNLESS OTHERWISE SPECIFIED AS CONTAINED IN THE UTAH STATE ROAD COMMISSION'S SPECIFICATIONS FOR ROAD SIGNS.

**UTAH STATE ROAD COMMISSION**  
STANDARD ROAD SIGNS  
1958-59

**STATE ROAD CONSTRUCTION NEXT 10 MILES**  
WHITE BACKGROUND WITH BLACK LETTERS, SERIES NO. 12" INSET AND 12" BLACK BORDER.

**CONSTRUCTION ZONE**  
WHITE BACKGROUND WITH 7" BLACK LETTERS, SERIES NO. 12" INSET AND 12" BLACK BORDER.

**END OF CONSTRUCTION**  
WHITE BACKGROUND WITH 7" BLACK LETTERS, SERIES NO. 12" INSET AND 12" BLACK BORDER.

**TRUCK CROSSING**  
YELLOW BACKGROUND WITH BLACK LETTERS, SERIES NO. 12" INSET AND 12" BLACK BORDER.

**DETOUR**  
WHITE BACKGROUND WITH BLACK LETTERS, SERIES NO. 12" INSET AND 12" BLACK BORDER.

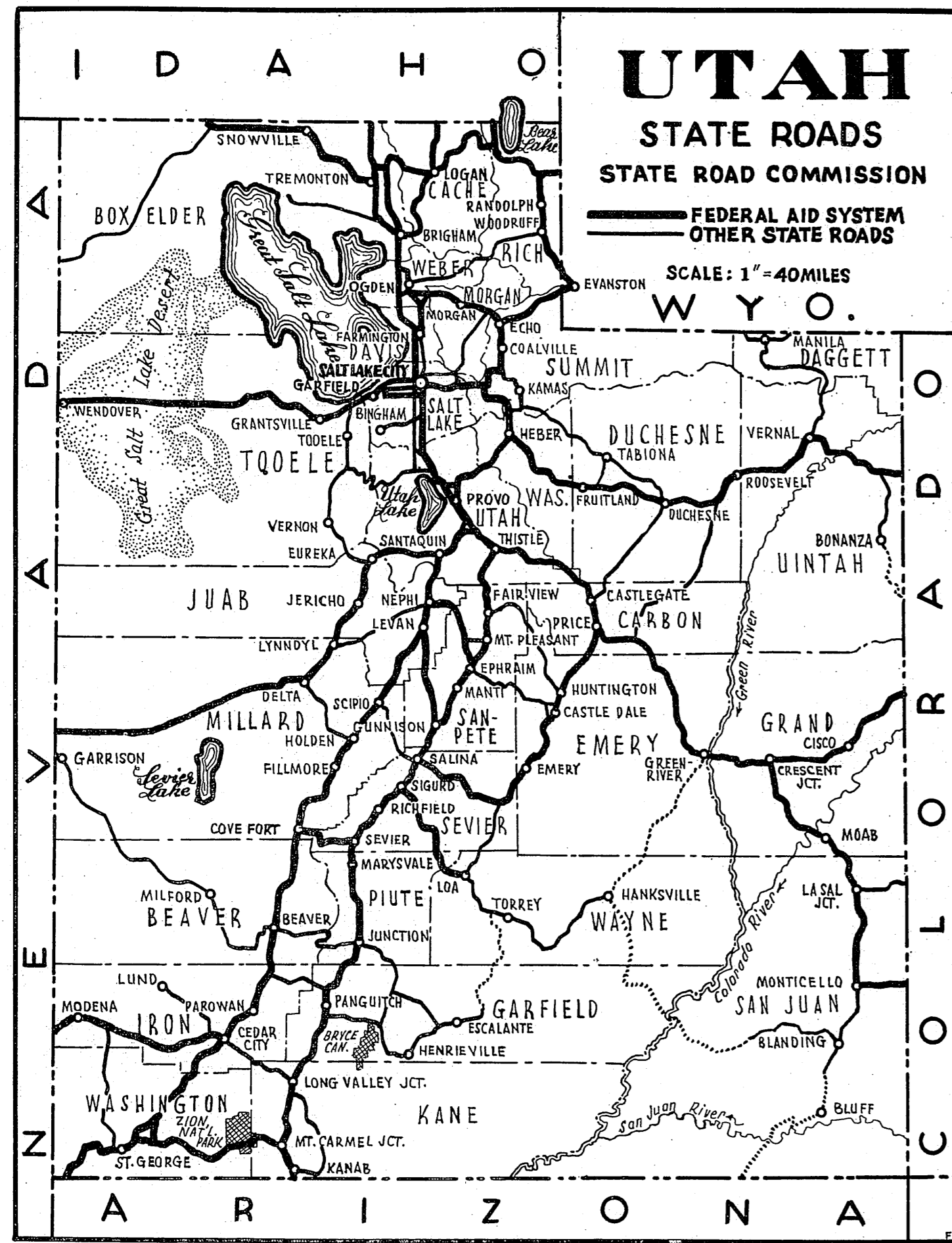
**DETOUR ARROW**  
WHITE BACKGROUND WITH BLACK ARROW, 12" WIDE AND 18" BLACK BORDER.

**BARRICADE**  
BARRICADE AND WINGS TO BE PAINTED YELLOW (2 COATS) - BARRICADE WINGS SHALL BE REFLECTORIZED WITH 8" X 8" AREA REFLECTORIZED PANEL WITH DIAGONALLY ALTERNATE STRIPES OF BROWN AND BLACK PAINT. EACH STRIP 3/4" WIDE, OR WITH 1/2" X 1/2" EXTERNAL BOTTOMS SET AT 4" CENTERS PLACED ON CENTER LINE OF BARRICADE WINGS.

**SIGN LOCATION AND HEIGHT IN RURAL AREAS**  
SIGN POSTS TO BE PAINTED WHITE (2 COATS).  
SIGN HEIGHT: 45" MINIMUM TO 72" MAXIMUM.  
POSTS TO BE PAINTED WHITE (2 COATS).  
SIGN LOCATION AND HEIGHT IN RURAL AREAS.

**GENERAL NOTES:**  
ALL SIGNS SHALL BE PAINTED WITH WHITE BACKGROUND UNLESS OTHERWISE SPECIFIED AS CONTAINED IN THE UTAH STATE ROAD COMMISSION'S SPECIFICATIONS FOR ROAD SIGNS. ALL SIGNS SHALL BE PAINTED WITH WHITE BACKGROUND UNLESS OTHERWISE SPECIFIED AS CONTAINED IN THE UTAH STATE ROAD COMMISSION'S SPECIFICATIONS FOR ROAD SIGNS. ALL SIGNS SHALL BE PAINTED WITH WHITE BACKGROUND UNLESS OTHERWISE SPECIFIED AS CONTAINED IN THE UTAH STATE ROAD COMMISSION'S SPECIFICATIONS FOR ROAD SIGNS.

**UTAH STATE ROAD COMMISSION**  
STANDARD ROAD SIGNS  
METHOD OF INSTALLATION  
1958-59



# STATE OF UTAH

## STATE ROAD COMMISSION

### PLANS OF PROPOSED STATE ROAD

FEDERAL AID PROJECT  
WEBER COUNTY

- D-AD-21(2) ~ LENGTH 0.114 MILES
- D-AD-20(2) ~ LENGTH 0.429 MILES
- D-AD-21(2) ~ R.R. AGREEMENT

FED. ROAD DIST. NO.	STATE	FED. AID PROJ. NO.	FISCAL YEAR	SHEET NO.	TOTAL SHEETS
UT.	UTAH	D-AD-21(6)	POSTWAR	1	
"	"	D-AD-20(6)	"	1	
"	"	D-AD-21(6)	"	1	
"	"	D-AD-22(6)	"	1	

#### INDEX TO SHEETS D-AD-21(2)

SHEET NO.	DESCRIPTION	DRAWING NO.	STATION
1	TITLE SHEET		
2	GRADE SHEET AND TYPICAL SECTION		
3-4	STD. HIGHWAY SIGNS	B-95, 1&2	
X-SECTIONS			

#### INDEX TO SHEETS D-AD-20(2)

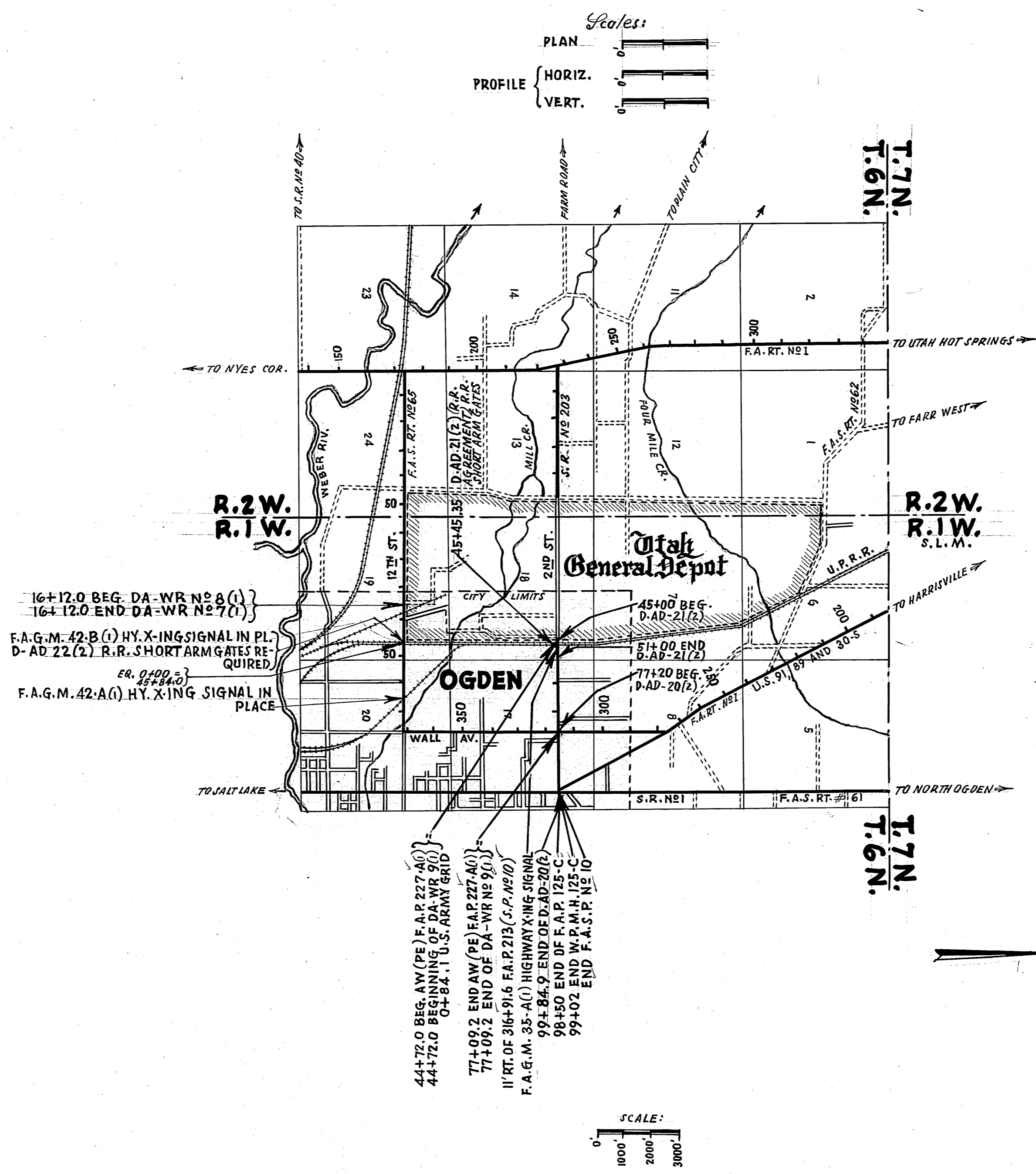
SHEET	DESCRIPTION	DRAWING	STATION
1	TITLE SHEET		
2	TYPICAL SECTION		
3	PLAN & PROFILE		
4-5	STD. HIGHWAY SIGNS	B-95, 1&2	
X-SECTIONS			

#### INDEX TO SHEETS D-AD-21(2) R.R. AGREEMENT

SHEET	DESCRIPTION	DRAWING	STATION
1	TITLE SHEET		
2	SITUATION PLAN		
3	HIGHWAY X-ING SIGNAL DETAILS	U.P.R.R. C-3766	
4-6	LOCATION AND CIRCUIT PLAN	" C-4446	

#### INDEX TO SHEETS D-AD-22(2)

SHEET	DESCRIPTION	DRAWING	STATION
1	TITLE SHEET		
2	SITUATION PLAN		
3	HY. X-ING SIGNAL DETAILS	U.P.R.R. C-3766	
4-5	LOCATION AND CIRCUIT PLAN	" C-4446	



APPROVED JULY 1955

STATE ROAD COMMISSION OF UTAH

*Ed. Johnson*  
CHIEF ENGINEER

DEPARTMENT OF COMMERCE  
BUREAU OF PUBLIC ROADS

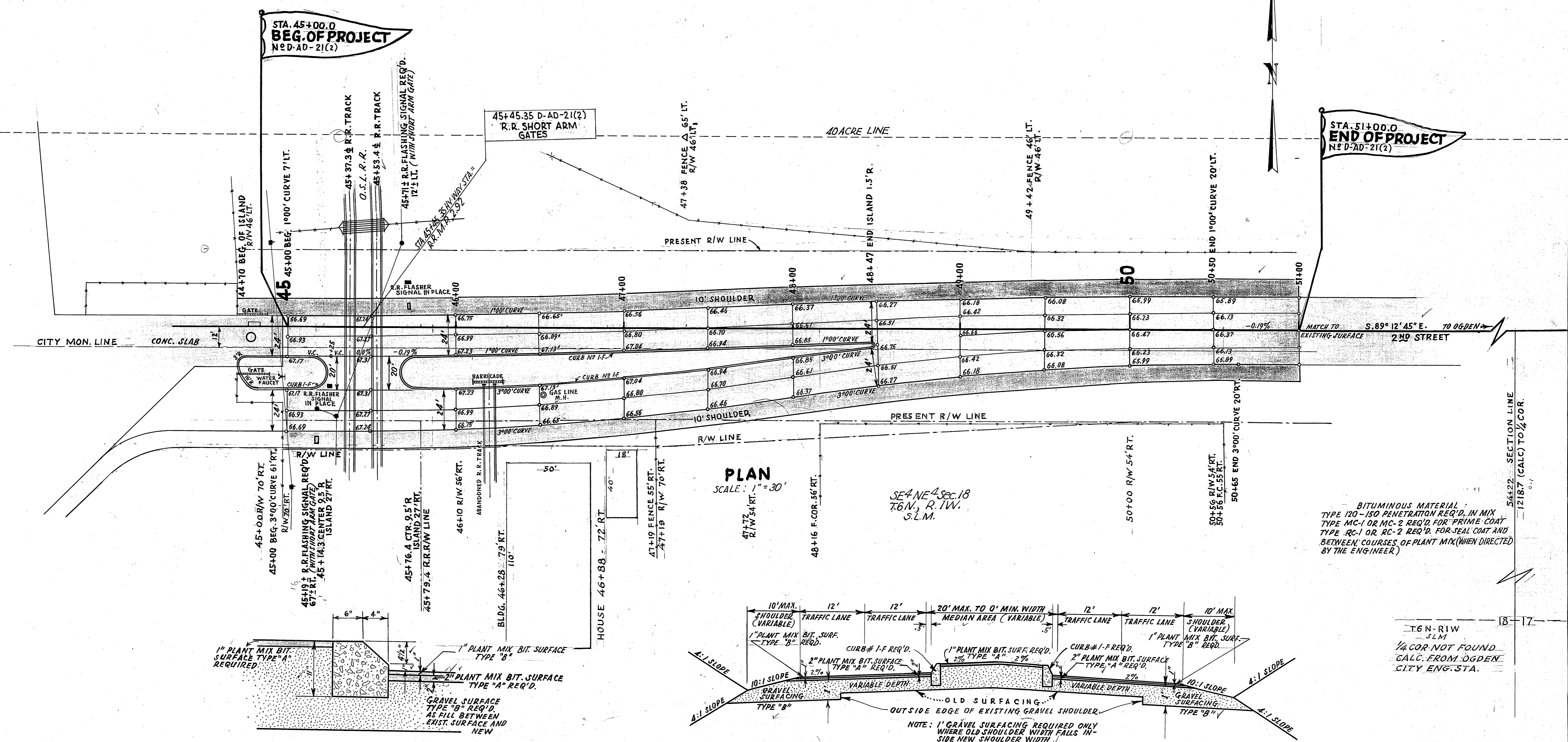
APPROVED: \_\_\_\_\_  
DISTRICT ENGINEER DATE

LIST OF STRUCTURES (FOR USE IN R.R. AGREEMENT ONLY)

STATION	IN PLACE	REQUIRED	REMARKS	DRAWING
45+19±		R.R. SHORT ARM GATE-67'± RT.		UPDR. C-3766-1 (16-A)
45+77±	R.R. FLASHER SIGNAL	R.R. SHORT ARM GATE-12'± LT.	SALVAGE EXIST. SIGNAL	8C-4446 (35MS)
45+25±	"	"	"	"

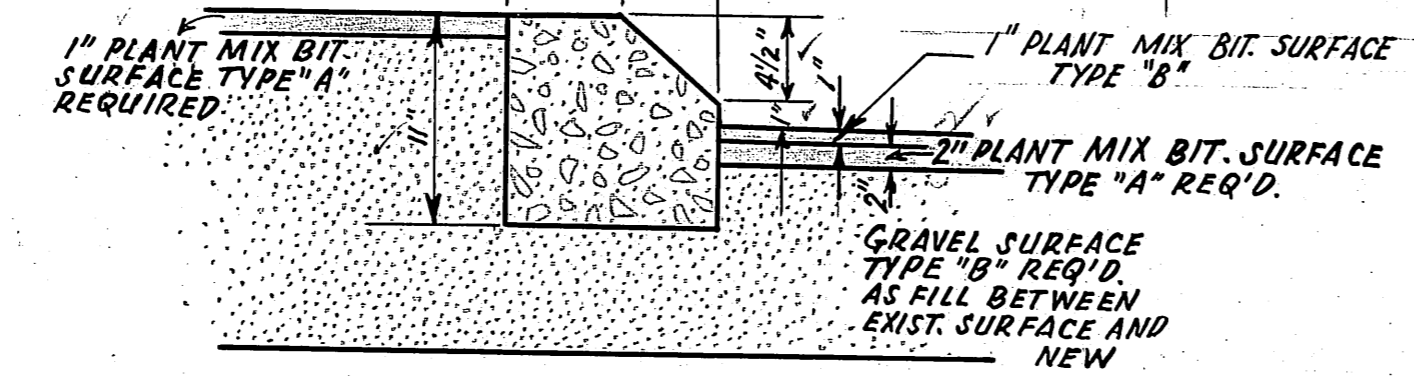
FED. ROAD DIST. NO.	STATE	FED. AID PROJ. NO.	FISCAL YEAR	SHEET NO.	TOTAL SHEETS
UT.	UTAH	D-AD-21(2)	POSTWAR	2	4
"	"	D-AD-21(2)	"	2	6

R.R. Agreement



STA. 45+00.0  
BEG. OF PROJECT  
Nº D-AD-21(2)

STA. 51+00.0  
END OF PROJECT  
Nº D-AD-21(2)



**CURB Nº 1-F**  
AREA = 0.406 SQ. FT.

BITUMINOUS MATERIAL TYPE 120-150 PENETRATION REQ'D. IN MIX TYPE MC-1 OR MC-2 REQ'D. FOR PRIME COAT TYPE RC-1 OR RC-2 REQ'D. FOR SEAL COAT AND BETWEEN COURSES OF PLANT MIX (WHEN DIRECTED BY THE ENGINEER)

T-6 N-R/W  
S.L.M.  
1/4 COR. NOT FOUND  
CALC. FROM OGDEN  
CITY ENG. STA.

REVISIONS

NO.	DATE	BY

SHEET \_\_\_\_\_ OF \_\_\_\_\_ SHEETS

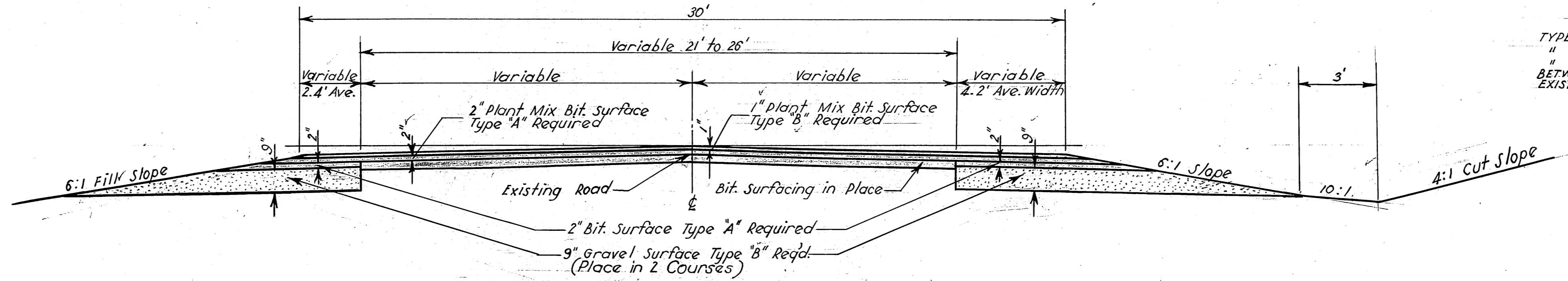
UTAH STATE ROAD COMMISSION  
SALT LAKE CITY, UTAH

DESIGNED BY: \_\_\_\_\_ SCALE: \_\_\_\_\_  
 DRAWN BY: \_\_\_\_\_ ISSUED: \_\_\_\_\_  
 TRACED BY: \_\_\_\_\_ APPROVED: \_\_\_\_\_  
 CHECKED BY: \_\_\_\_\_

BR. NO. \_\_\_\_\_ DRL. NO. \_\_\_\_\_

# TYPICAL CROSS SECTION

FED. ROAD DIST. NO.	STATE	PROJ. NO.	FISCAL YEAR	SHEET NO.	TOTAL SHEETS
UTAH	UTAH	DA-202	POST WAR	2	



**BIT MATERIAL**  
 TYPE 120-150 PENETRATION, REQUIRED IN MIX  
 " MC-1 OR MC-2 REQD. FOR PRIME COAT  
 " RC-1 " RC-2 " SEAL  
 BETWEEN COURSES OF PLANT MIX & OVER  
 EXISTING SURFACE (WHEN DIRECTED BY THE ENGINEER)

NOTE: Grade & Gravel Driveways as directed.

STA. 77+20 TO STA. 84.9

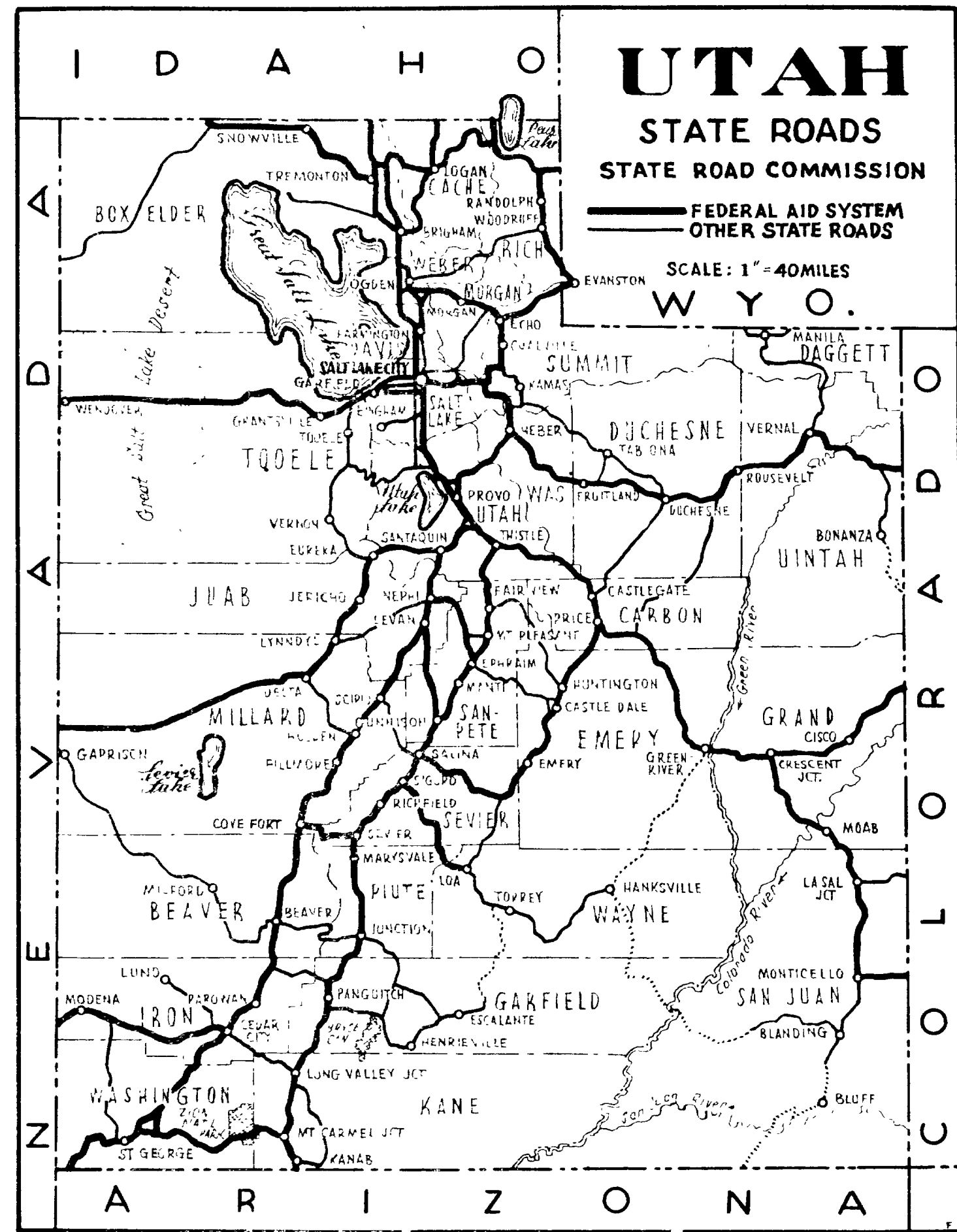
REVISIONS	DATE	BY

DESIGN SPEED M.P.H.

UTAH STATE ROAD COMMISSION  
 SALT LAKE CITY - UTAH  
**PLANT MIX BIT SURFACED ROADWAY**







# STATE OF UTAH STATE ROAD COMMISSION

## PLANS OF PROPOSED STATE ROAD

FEDERAL AID PROJECT  
WEBER COUNTY

- D-AD-21(2) ~ LENGTH 0.114 MILES
- D-AD-20(2) ~ LENGTH 0.429 MILES
- D-AD-21(2) ~ R.R. AGREEMENT

FED. ROAD DIST. NO.	STATE	FED. AID PROJ. NO.	FISCAL YEAR	SHEET NO.	TOTAL SHEETS
UT.	UTAH	D-AD-21(2)	POSTWAR	1	
"	"	D-AD-20(2)	"	1	
"	"	D-AD-21(2)	"	1	
"	"	D-AD-22(2)	"	1	

### INDEX TO SHEETS D-AD-21(2)

SHEET NO.	DESCRIPTION	DRAWING	STATION
1	TITLE SHEET		
2	GRADE SHEET AND TYPICAL SECTION		
3-4	STD. HIGHWAY SIGNS		B-95, 142
X-SECTIONS			

### INDEX TO SHEETS D-AD-20(2)

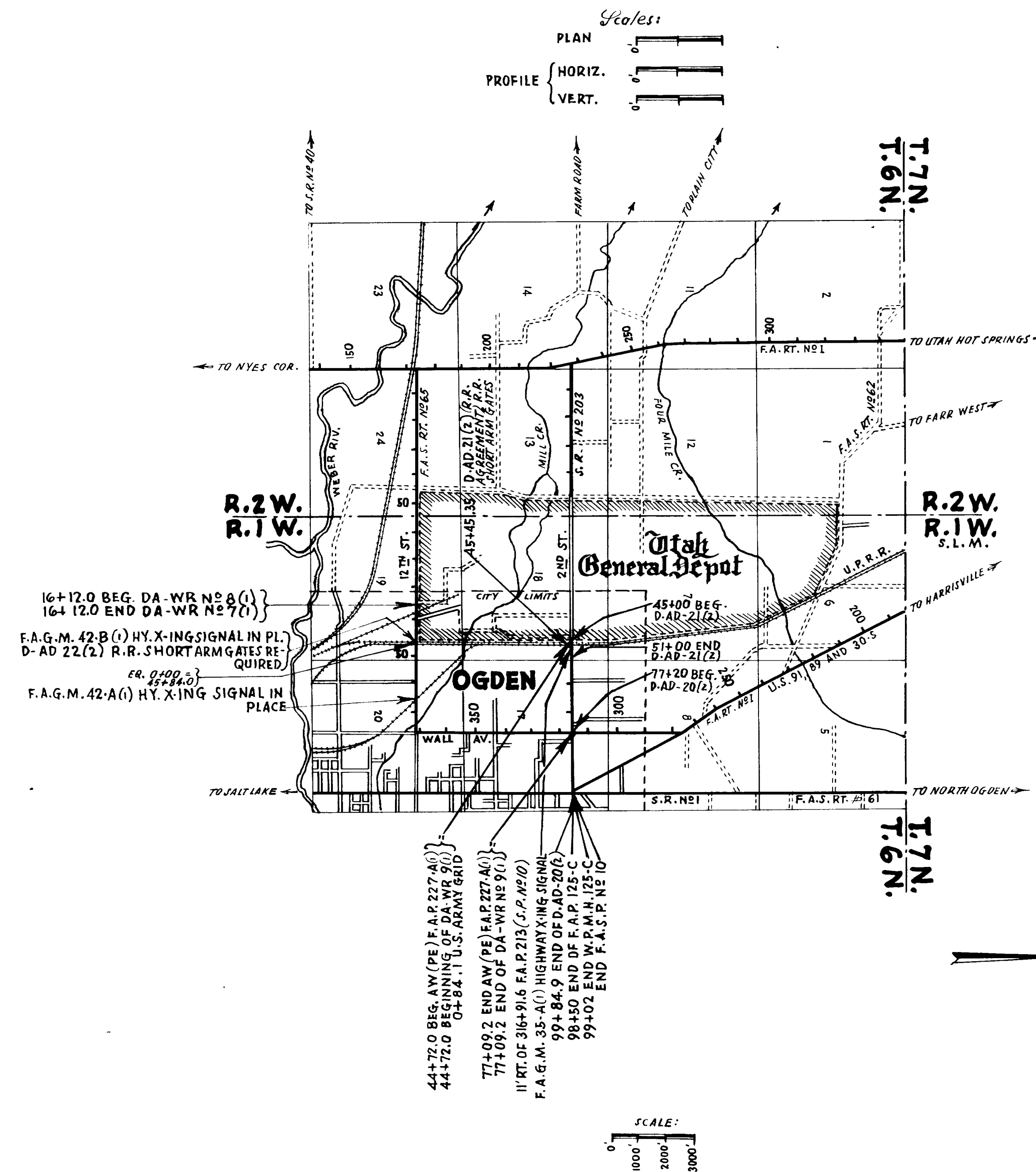
SHEET	DESCRIPTION	DRAWING	STATION
1	TITLE SHEET		
2	TYPICAL SECTION		
3	PLAN & PROFILE		
4-5	STD. HIGHWAY SIGNS		B-95, 142
X-SECTIONS			

### INDEX TO SHEETS D-AD-21(2) R.R. AGREEMENT

SHEET	DESCRIPTION	DRAWING	STATION
1	TITLE SHEET		
2	SITUATION PLAN		
3	HIGHWAY X-ING SIGNAL DETAILS	U.P.R.R. C-3766	
4-6	LOCATION AND CIRCUIT PLAN	" C-4446	

### INDEX TO SHEETS D-AD-22(2)

SHEET	DESCRIPTION	DRAWING	STATION
1	TITLE SHEET		
2	SITUATION PLAN		
3	HY. X-ING SIGNAL DETAILS	U.P.R.R. C-3766	
4-5	LOCATION AND CIRCUIT PLAN	" C-4446	



APPROVED JULY 1955

STATE ROAD COMMISSION OF UTAH

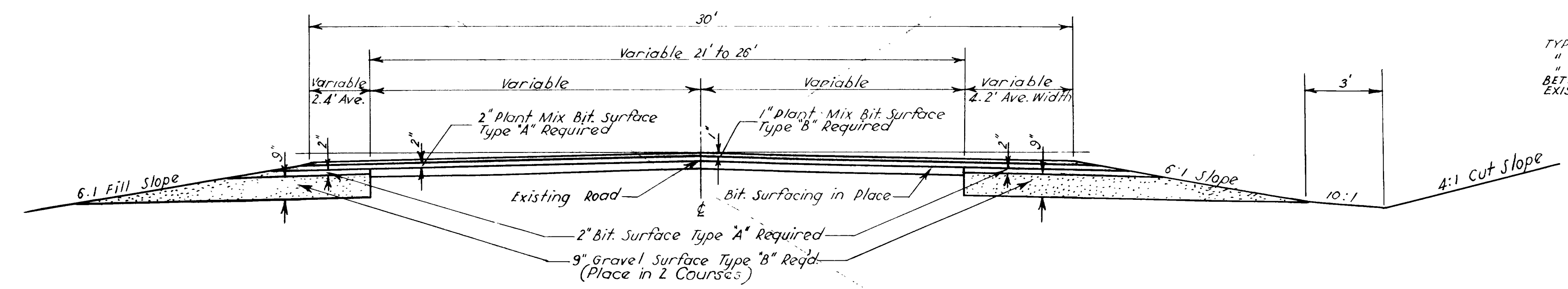
*Robert Johnson*  
CHIEF ENGINEER

DEPARTMENT OF COMMERCE  
BUREAU OF PUBLIC ROADS

APPROVED \_\_\_\_\_  
DISTRICT ENGINEER DATE

# TYPICAL CROSS SECTION

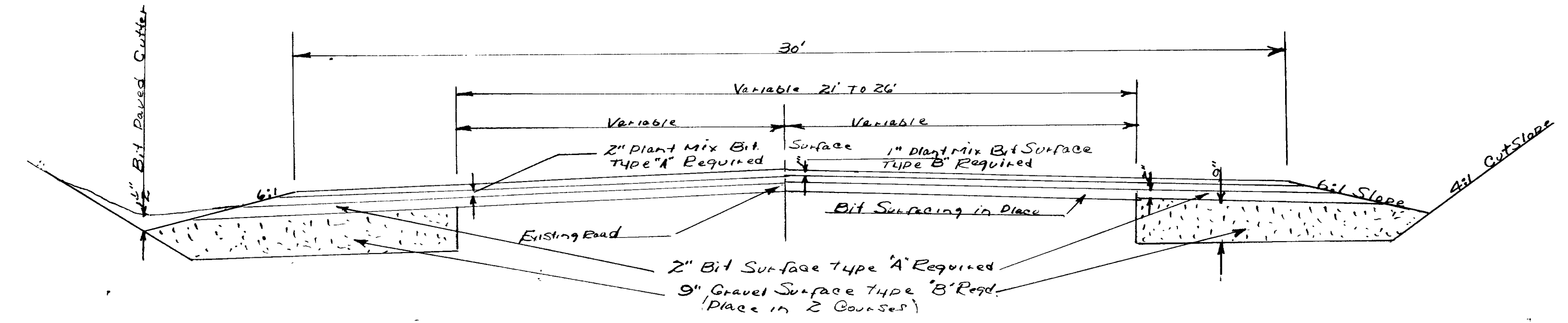
FED. ROAD DIST. NO.	STATE	PROJ. NO.	FISCAL YEAR	SHEET NO.	TOTAL SHEETS
UTAH	UTAH	DA0-2002	POST WAR	2	



**BIT MATERIAL**  
 TYPE 120-150 PENETRATION, REQUIRED IN MIX  
 " MC-1 OR MC-2 REQ'D. FOR PRIME COAT  
 " RC-1 " RC-2 " " SEAL "  
 BETWEEN COURSES OF PLANT MIX & OVER  
 EXISTING SURFACE (WHEN DIRECTED BY THE ENGINEER)

NOTE: Grade & Gravel Driveways as directed

STA. 77+20 TO STA. 84+9



REVISIONS  
 DATE BY

UTAH STATE ROAD COMMISSION  
 SALT LAKE CITY UTAH

PLANT MIX BIT SURFACED ROADWAY

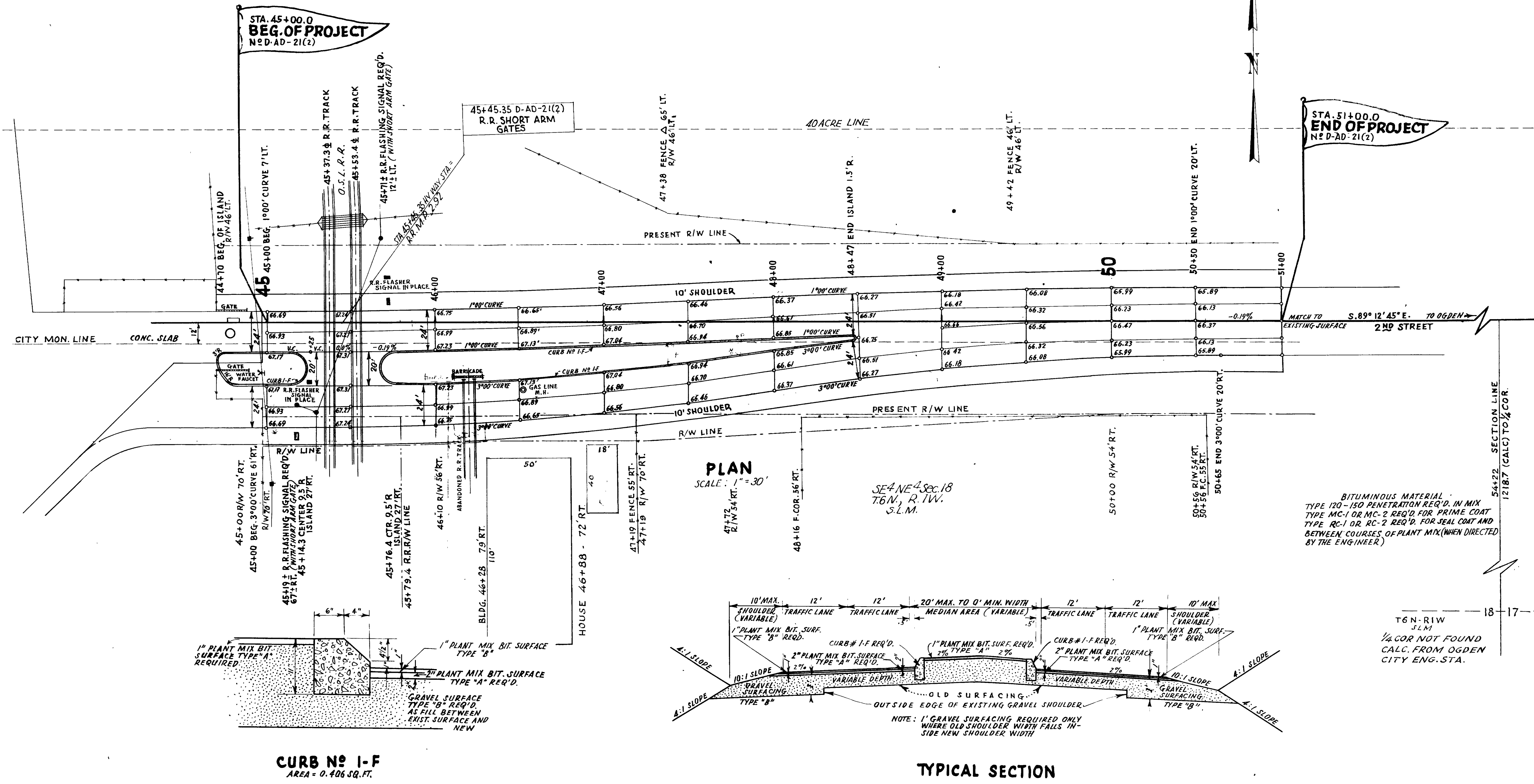
DESIGN SPEED M.P.H.



STATION	IN PLACE	REQUIRED	REMARKS	DRAWING
45+19±		R.R. SHORT ARM GATE - 67'± RT.		UPPER C-3766-R16A
45+71±	R.R. FLASHER SIGNAL	R.R. SHORT ARM GATE - 12'± LT.	SALVAGE EXIST. SIGNAL	SC-2446 (3515)
45+25±	"	"	"	"

FED. ROAD DIST. NO.	STATE	FED. AID PROJ. NO.	FISCAL YEAR	SHEET NO.	TOTAL SHEETS
UT.	UTAH	D-AD-21(2)	POSTWAR	2	4
"	"	D-AD-21(2)	"	2	6

R.R. Agreement



BITUMINOUS MATERIAL:  
TYPE 120-150 PENETRATION REQ'D. IN MIX  
TYPE MC-1 OR MC-2 REQ'D. FOR PRIME COAT  
TYPE RC-1 OR RC-2 REQ'D. FOR SEAL COAT AND  
BETWEEN COURSES OF PLANT MIX (WHEN DIRECTED  
BY THE ENGINEER)

T6N-R1W  
S.L.M.  
1/4 COR NOT FOUND  
CALC. FROM OGDEN  
CITY ENG. STA.

REVISIONS  
DATE BY

SHEET		SHEET	
UTAH STATE ROAD COMMISSION SALT LAKE CITY, UTAH			
EN. BY	CHK. BY	DATE	BY
DES. BY	APPROVED BY		
ISS. BY			
310			
210			

5

**TURN SIGN**  
YELLOW BACKGROUND WITH BLACK ARROW, 12" WIDE AND 18" BLACK BORDER.

**SLOW**  
YELLOW BACKGROUND WITH BLACK LETTERS, 18" WIDE AND 18" BLACK BORDER.

**SHARP CURVE**  
YELLOW BACKGROUND WITH BLACK ARROW, 12" WIDE AND 18" BLACK BORDER.

**ROUGH ROAD**  
YELLOW BACKGROUND WITH BLACK LETTERS, 18" WIDE AND 18" BLACK BORDER.

**FLAT CURVE**  
YELLOW BACKGROUND WITH BLACK ARROW, 12" WIDE AND 18" BLACK BORDER.

**BRIDGE OUT**  
YELLOW BACKGROUND WITH BLACK LETTERS, 18" WIDE AND 18" BLACK BORDER.

**FRESH OIL**  
YELLOW BACKGROUND WITH BLACK LETTERS, 18" WIDE AND 18" BLACK BORDER.

**DETOUR**  
WHITE BACKGROUND WITH BLACK LETTERS, 18" WIDE AND 18" BLACK BORDER.

**END DETOUR**  
WHITE BACKGROUND WITH BLACK LETTERS, 18" WIDE AND 18" BLACK BORDER.

**STOP**  
YELLOW BACKGROUND WITH BLACK LETTERS, 18" WIDE AND 18" BLACK BORDER.

**UTAH 47**  
WHITE BACKGROUND WITH BLACK LETTER AND 18" BLACK BORDER.

**UTAH 91**  
WHITE BACKGROUND WITH BLACK LETTER AND 18" BLACK BORDER.

**GENERAL NOTES:**  
ALL SIGNS SHALL BE MADE IN ACCORDANCE WITH THE UTAH STATE ROAD COMMISSION'S SPECIFICATIONS AS CONTAINED IN THE UTAH STATE ROAD COMMISSION'S SPECIFICATIONS FOR ROAD SIGNS AND MARKINGS, AND THE UTAH STATE ROAD COMMISSION'S SPECIFICATIONS FOR ROAD SIGNS AND MARKINGS. ALL SIGNS AND MARKINGS SHALL BE OF THE PROPORTION AND FINISH SPECIFIED IN THE UTAH STATE ROAD COMMISSION'S SPECIFICATIONS FOR ROAD SIGNS AND MARKINGS. ALL SIGNS AND MARKINGS SHALL BE IN ACCORDANCE WITH THE UTAH STATE ROAD COMMISSION'S SPECIFICATIONS FOR ROAD SIGNS AND MARKINGS. WHERE CONDITIONS REQUIRE GREATER VISIBILITY, NECESSITATING A LARGER SIGN, THE OUTSIDE DIMENSIONS SHALL BE INCREASED IN MULTIPLES OF 6". WHERE IT IS NECESSARY FOR THE SAFETY OF THE TRAVELING PUBLIC, LARGER SIGNS SHALL BE USED. THESE SIGNS SHALL CONFORM TO THE STANDARD PRACTICE FOR SUPER SIGNS, AS SPECIFIED IN THE UTAH STATE ROAD COMMISSION'S MANUAL FOR HIGHWAY SIGNING, ETC., PARAGRAPH 1.6.2.

**UTAH STATE ROAD COMMISSION**  
**STANDARD ROAD SIGNS**  
1958-59

**STATE ROAD CONSTRUCTION NEXT 10 MILES**  
NOTE: IN PLACE INSERT SHALL BE ALSO REMOVABLE FROM MILEAGE TO MARK 1/2 MILE ONLY.  
WHITE BACKGROUND WITH BLACK LETTERS, SERIES "C", 12" WIDE AND 18" BLACK BORDER.

**CONSTRUCTION ZONE**  
WHITE BACKGROUND WITH 7" BLACK LETTERS, SERIES "C", 12" WIDE AND 18" BLACK BORDER.

**END OF CONSTRUCTION**  
WHITE BACKGROUND WITH 7" BLACK LETTERS, SERIES "C", 12" WIDE AND 18" BLACK BORDER.

**TRUCK CROSSING**  
YELLOW BACKGROUND WITH BLACK LETTERS, SERIES "D", 12" WIDE AND 18" BLACK BORDER.

**DETOUR**  
WHITE BACKGROUND WITH BLACK LETTERS, SERIES "D", 12" WIDE AND 18" BLACK BORDER.

**DETOUR ARROW**  
WHITE BACKGROUND WITH BLACK ARROW, 12" WIDE AND 18" BLACK BORDER.

**BARRICADE**  
BARRICADE AND WINGS TO BE PAINTED YELLOW (2 COATS) - BARRICADE WINGS SHALL BE REFLECTORIZED WITH 8" X 8" AREA REFLECTORIZED PANEL WITH DIAGONALLY ALTERNATE STRIPES OF BROWN AND BLACK. EACH STRIPES 2" WIDE, OR WITH 1/2" X 1/2" EXTERNAL BOTTOMS SET AT 4" CENTERS PLACED ON CENTER LINE OF BARRICADE WINGS.

**SIGN LOCATION AND HEIGHT IN RURAL AREAS**  
SIGN POSTS TO BE PAINTED WHITE (2 COATS).  
SIGN SHALL BE PAINTED WITH 2 COATS OF BLACK HEAVY RESISTANT PAINT.

**GENERAL NOTES:**  
ALL SIGNS SHALL BE MADE IN ACCORDANCE WITH THE UTAH STATE ROAD COMMISSION'S SPECIFICATIONS AS CONTAINED IN THE UTAH STATE ROAD COMMISSION'S SPECIFICATIONS FOR ROAD SIGNS AND MARKINGS, AND THE UTAH STATE ROAD COMMISSION'S SPECIFICATIONS FOR ROAD SIGNS AND MARKINGS. ALL SIGNS AND MARKINGS SHALL BE OF THE PROPORTION AND FINISH SPECIFIED IN THE UTAH STATE ROAD COMMISSION'S SPECIFICATIONS FOR ROAD SIGNS AND MARKINGS. ALL SIGNS AND MARKINGS SHALL BE IN ACCORDANCE WITH THE UTAH STATE ROAD COMMISSION'S SPECIFICATIONS FOR ROAD SIGNS AND MARKINGS. WHERE CONDITIONS REQUIRE GREATER VISIBILITY, NECESSITATING A LARGER SIGN, THE OUTSIDE DIMENSIONS SHALL BE INCREASED IN MULTIPLES OF 6". WHERE IT IS NECESSARY FOR THE SAFETY OF THE TRAVELING PUBLIC, LARGER SIGNS SHALL BE USED. THESE SIGNS SHALL CONFORM TO THE STANDARD PRACTICE FOR SUPER SIGNS, AS SPECIFIED IN THE UTAH STATE ROAD COMMISSION'S MANUAL FOR HIGHWAY SIGNING, ETC., PARAGRAPH 1.6.2.

**UTAH STATE ROAD COMMISSION**  
**STANDARD ROAD SIGNS**  
METHOD OF INSTALLATION  
1958-59